



Accelero Hybrid II-120

Multi-compatible Air/Liquid Cooler for Graphics Card

Main Features

- Outstanding cooling performance - 320 Watts
- Patented back-side cooler lowers RAM and VRM temperatures
- Unparalleled performance with liquid cooling unit
- Virtually silent thanks to low noise fan
- No thermal glue necessary
- Improved fan controller for NVIDIA graphics cards



www.arctic.ac

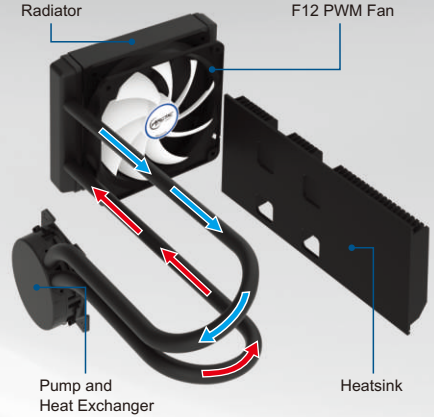


Accelero Hybrid II-120

Multi-compatible Air/Liquid Cooler for Graphics Card

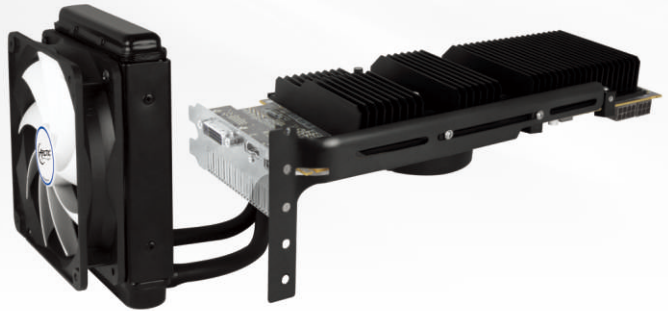
The **Accelero Hybrid II-120** combines air and liquid cooling technologies and offers an extremely efficient solution for gamers and computer enthusiasts: The successor of the popular Accelero Hybrid is up to 60% cooler while 70% quieter than the stock cooler.

ARCTIC has developed and patented a back side cooler for previously unknown cooling performance. It offers a specific and extremely efficient solution for an improved cooling of RAM and VR. The **Accelero Hybrid II-120** has a wide compatibility which makes it versatile to install on different graphic cards from NVIDIA and AMD.



Patented Back Side Cooler

Voltage Regulator ICs are heating up the complete board to a level which is not just for the ICs itself dangerous, but mainly lowers the service life of other components dramatically. Our patented back side cooler keeps the board and all components around the GPU on low temperature.

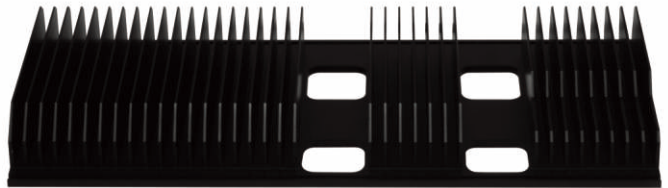


Back in Original
Condition without
any Marks

Lower VRM
Temperature

Better
Over-Clocking

Long Service
Life



Specifications (Heat Exchanger Module)	
Cooling Capacity	320 Watts
Fan	120 mm, 400 - 1,350 RPM (Controlled by PWM)
Bearing	Fluid Dynamic Bearing
Heat Exchanger Type	Aluminium 1.0"
Noise Level	0.3 Sone
F12 PWM Fan Current / Voltage	0.25A / +12V DC
Tube Length	420 mm
Tube Diameter	11 mm
Dimensions (LxWxH)	Heat Exchanger : 70 x 70 x 28 mm Backplate : 218 x 98 x 23 mm Radiator module incl. Fan: 150 x 120 x 50 mm
Net Weight	Heat Exchanger : 220 g Backplate : 304 g Radiator module incl. Fan: 473 g



Compatibility

AMD Radeon:

R9 290(X), R9 285, 270(X), R7 265, HD 8870, 7870(XT, GHz), 7850, 6970, 6950, 6870, 6850, 6790, 5870, 5850, 5830, 4890, 4870, 4850, 4830, 3870, 3850, 3690

NVIDIA GeForce:

GTX 980, 970, Titan (Black), 780 (Ti), 770, 760(Ti), 680, 670, 660 (Ti), 650 (Ti boost), 580, 570, 560 (Ti,SE), 550 Ti, 480, 470, 465, 460(SE), GTS 450, 250, 240 (OEM)

The Accelero Hybrid II 120 is compatible only with the graphics card using a standard size PCB with a width of 98 mm.

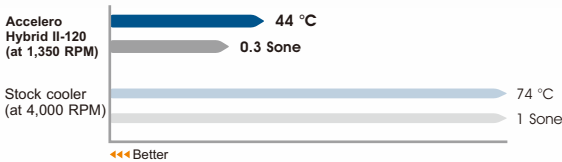
Graphics cards with different dimensions will not be compatible with this cooler. This includes:

- Low profile Graphics card
- Graphics cards with extended PCB
(such as : ASUS DirectCU II R9 290, GTX780-DC2OC-3GD5)

The compatibility list is based on AMD Radeon and NVIDIA's reference board layout only. ARCTIC holds no responsibility for incompatibility on non reference boards. Please check the height restriction drawing before purchase.

In the vast majority of the cases, it is not possible to assembly this cooler when the graphics card is located in the first extension slot of the motherboard.

Cooling Performance & Noise Level on NVIDIA GTX 780



Wide Compatibility



Multiple Airflow Selection

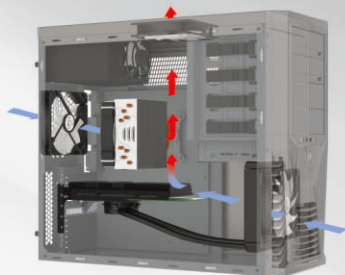


High performance MX-4



4 Flexible Airflow Directions

Option A



Lowest GPU and CPU temperature, may slightly affect PC Case ambient temperature.

Option B



Lowers PC Case ambient temperature, slightly affects GPU temperature negatively, may support CPU cooling.

Option C



Lowest GPU temperature, may slightly affect CPU cooling.

Option D



Lowest CPU temperature, slightly affects GPU temperature negatively.