



# High Gain All Band Cellular LPDA Antenna

Operating Frequency 820-1000MHz & 1700-2800MHz  
Product Code LPDA-A0044



This high gain wideband directional antenna covers the GSM 900 and GSM1800 / UMTS bands. Its configuration is suitable for various cellular communications systems.

## Features:

- Broadband.
- Covers various international cellular bands.
- Robust and weatherproof
- Can be used up to 2.8GHz

## Application areas:

This antenna provides communications capabilities for the following:

<b>Standard</b>	<b>Frequency (MHz)</b>
TACS Europe and Asia only	871 - 949
TDMA/CDMA/AMPS	824 - 894
SM "GSM 900"	870- 960
GSM 1800 / PCS/ PCN	1710 - 1880
DECT	1880 - 1900
PHS Japan, Taiwan and China only	1895 - 1918
GSM "GSM1900" USA and Canada only	1850 – 1990
UMTS	1900 - 2170
3G Extension Band	2500 - 2690



**Specifications:**

**Product Code:**

LPDA-A0044  
LPDA-A0044-01

0.5 m HDF195 with SMA(m) connector  
7.0 m HDF195 with SMA(m) connector

**Electrical:**

Frequency (MHz)	820-1000	2200-2800
	1700-2200	
Gain (max) (LPDA-A0044)	12 dBi (+0.5 dB)	11 dBi (+0.5 dB)
Gain (min over the band) (LPDA-A0044)	10.5 dBi (+0.5 dB)	9 dBi (+0.5 dB)
VSWR	< 2.0:1	<2.5:1
Feed power handling	10 W	
E-plane 3 dB beamwidth	50° (± 5°)	
H-plane 3 dB beamwidth	55° (± 5°)	
Front to back (F/B ratio)	20 dB (± 3 dB)	
Nominal input impedance	50 Ohm	
Polarisation	Linear	

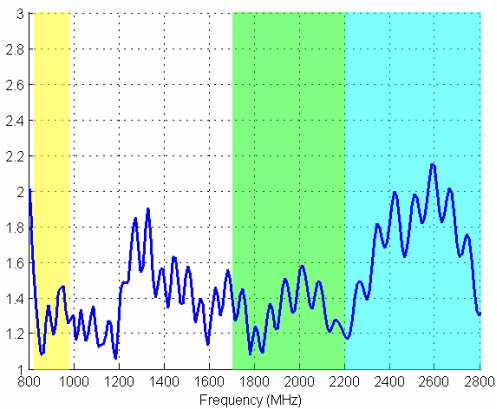
**Environmental:**

Wind Survival	160 km/h
Temperature Range (Operating)	- 20° C to +70° C
Shock	40G at 10 msec
Thermal Shock	-20°C to +70°C:10 cycles
Water Ingress Rating	IP65 (NEMA 4X)

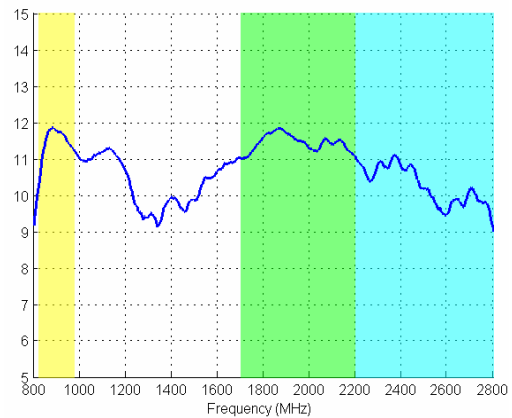
**Mechanical:**

Dimensions (l x w x d)	1.1m x 180mm x 60 mm
Weight	1.24 kg
Mounting	Stainless steel brackets for up to 60 mm poles

**VSWR and Gain Pattern:**

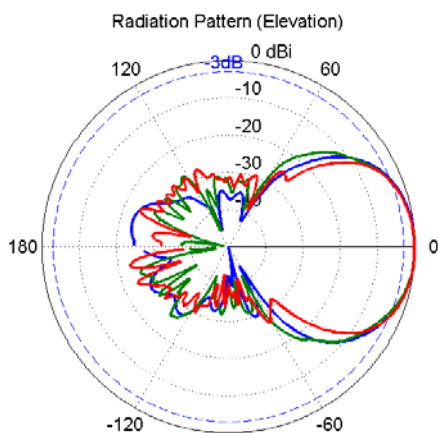


VSWR

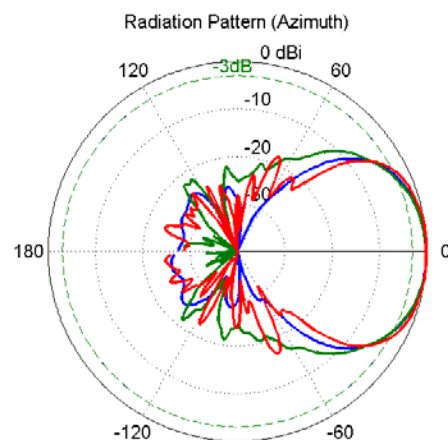


Gain

**Radiation Patterns**



E-Plane



H-Plane